

Server version

Centralized USB Key Management

System requirements

- Windows XP Pro/ Windows 2003/ Windows Vista/Seven or Windows 2008 Server as your Terminal Server computer

Rohos Logon Key Server Version includes USB Key manager tools that allow setting up and manage USB tokens and Rohos Logon in corporate networks.

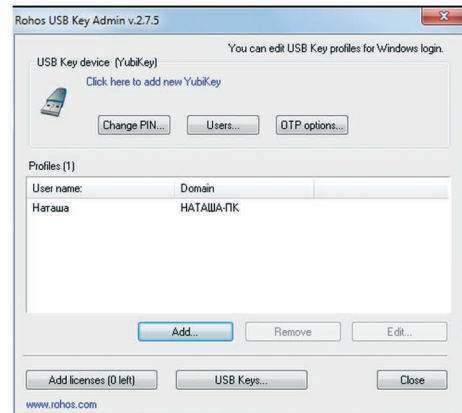
Server edition is intended for Administrator's workstation only. It has built-in USB Key Management utility (create and manage USB keys) and Rohos Remote Configuration utility (setup Rohos Logon Key settings on the computers joined to Active Directory).

Rohos USB Key Management utility.

If you have 10 or more users in your organization, you can use Rohos USB Key Admin management utility. It allows creating and editing logon profiles on USB token.

Features:

- Create USB keys for login;
- **Centralized License management.** Automatically uses license keys list to create prelicensed USB keys to simplify license management;
- **Back up/Restore operations.** Allows to Backup and restore USB Key content (logon profile);
- **PIN code security.** Set up a PIN code for USB Key protection;
- **Roaming profiles.** Create and use roaming logon profiles on a USB Key;
- **Copy/Paste operations.** Allows to copy/paste logon profiles between USB Keys;
- **Setup USB Key for Remote Desktop Login (RDP).** Copy Rohos Remote Login component into USB stick. Use this feature if you don't want to install Rohos into any computer you login from;
Setup OTP tokens (Yubikey, Umikey) and MiFare for Remote Desktop Login;



Rohos Remote Config Utility.

This Utility allows the Administrator of Active Directory changing Rohos Logon Key settings on remote workstations.

Rohos Remote Config Utility main window:

- Allows to Create the list of computers where Rohos Logon Key is installed
- Edit Rohos Logon settings on a remote computer
- Allows to edit logon profiles on a USB key connected to remote computer