



## Step by step guide how to password protect your USB flash drive

[www.rohos.com](http://www.rohos.com)

## Content

1. How to create encrypted partition on USB flash drive
2. How to work with encrypted partition on the USB flash drive
  - Rohos Mini Portable
  - Virtual keyboard
3. How to access encrypted partition on a guest PC (as a guest or user with no admin rights)
4. How to delete Rohos disk
5. How to delete all Rohos files from your USB flash drive

## How to password protect your USB flash drive.

According to the XXX agency reports 80% of all lost and stolen USB flash drives contained a very important information: business or government data. The following guide is for private users that really concerned about data security on their notebooks, mobile phones, USB flash drives and other mobile devices.

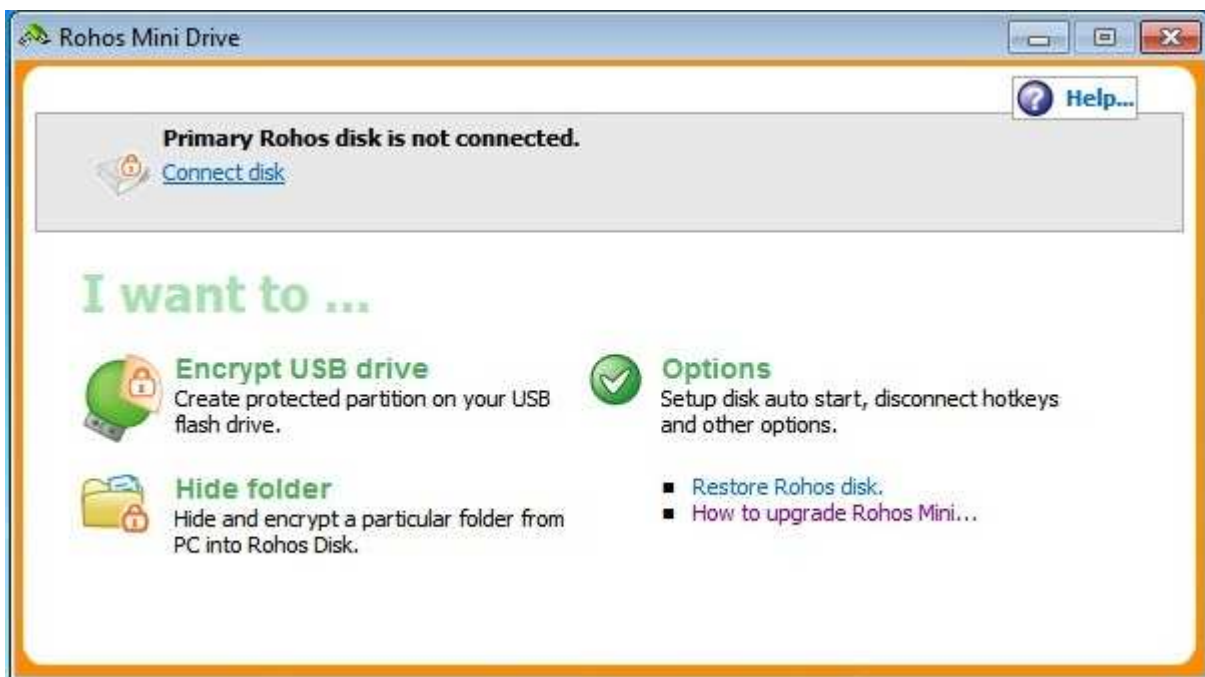
Suppose you have many sensitive files on USB flash drive and you need to use it on home and office PC or at university PC. There are a few free tools on the web that allows you protecting entire USB flash drive or certain files with a password and encryption. If you use strong encryption plus password protection, be sure your data will remain secure.

One of the free and powerful USB flash drive encryption tools is Rohos Mini Drive. It creates hidden and password protected partition on any USB flash drive. Also it has a separate portable tool that allows accessing encrypted partition on USB flash drive from any PC where you work as a guest or user with no admin rights. The only limitation it has - 2GB encryption size limit.

Here is a guide on how to encrypt a part of your USB flash drive and access it on any computer:

## How to create encrypted partition on USB flash drive

- Download and install Rohos Mini Drive
- After installation of Rohos Mini Drive, insert your USB drive to the computer and run the Rohos Mini Drive application.



screen shot 1

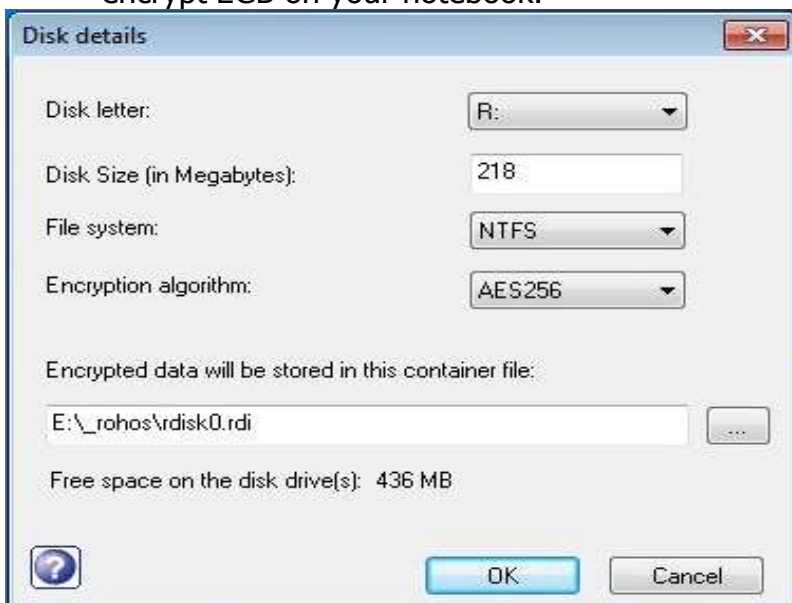
- Click on **“Encrypt USB drive”** and have your USB flash drive connected to PC.



screen shot 2

- It automatically detects your USB flash drive and offers the best options on how to encrypt your USB flash drive.
- On the screenshot: it creates a partition under letter F: with 900 Mb space. You can change the encrypted partition size and disk letter by clicking [**Change...**].

Please note you can also choose your local HDD if you wish to use Rohos Mini just to encrypt 2GB on your notebook.



screen shot 3

Remember Rohos Mini encrypted disk size limit is 2 GB.

- After all USB drive encryption settings are OK you may specify a password that you will use to access this encrypted partition and then click on "**Create disk**".

Please note: Recommended password length is 8 symbols as minimum. Also your password will be stronger if you use numbers and special symbols (e.g. /\+=\*&^,.). Also we recommend using only English characters in password (this would allow using Virtual Keyboard feature later).

Later if you wish you may change your password for USB drive encryption. It should take a few seconds to create an encrypted disk on your USB drive.

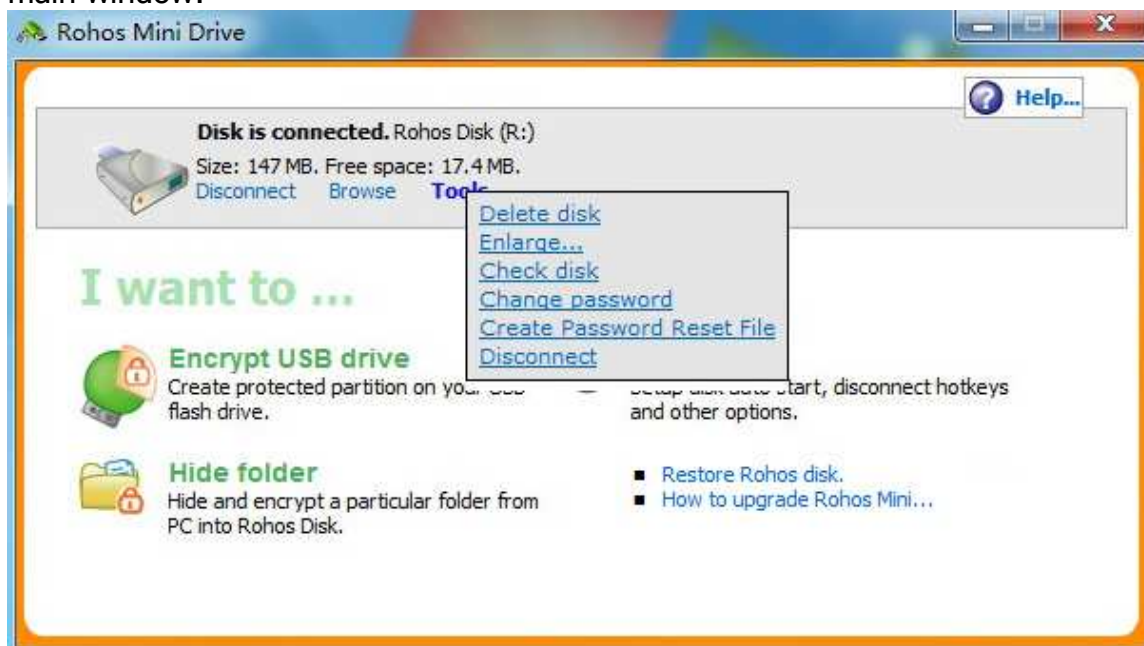


screen shot 4



screen shot 5

After the process of creating Encrypted partition is completed you'll see its status in Rohos Mini main window:



screen shot 6

Disk letter R: is your encrypted partition on USB flash drive. It resides within a file on USB flash drive `_rohOS\rdisk.rdi`. Now you can cut and paste files and folders to disk R:\. The data are encrypted automatically and on-the-fly when you save it to disk R:\

## How to work with protected partition on USB flash drive

**Rohos Mini Portable** tool allows working with a password protected partition on any PC. You just click on "Rohos Mini" icon on the USB flash drive root folder.



screen shot 7

and enter your password :



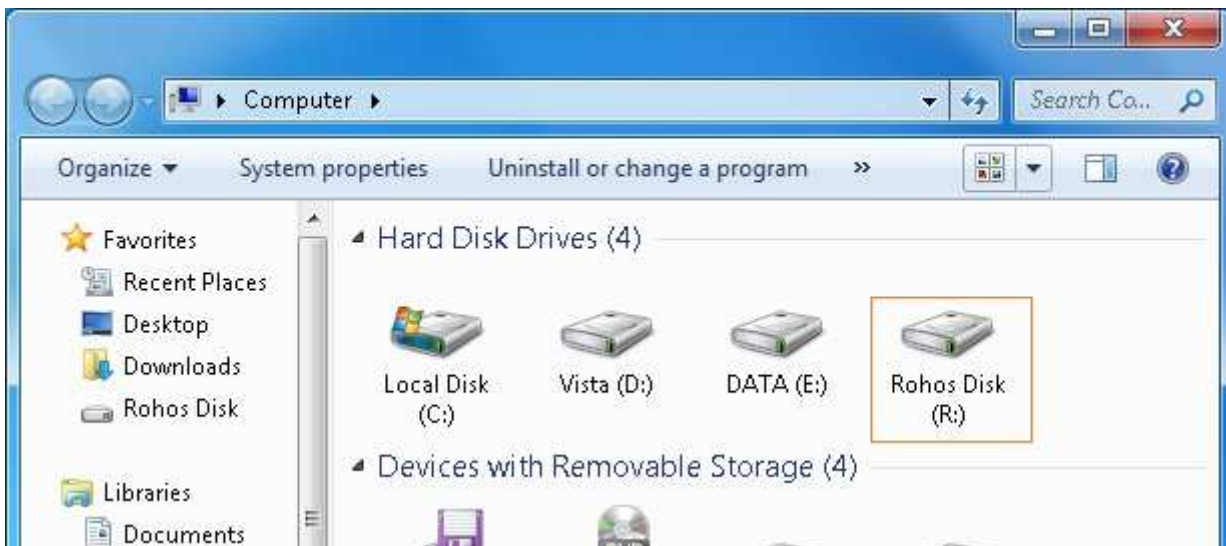
screen shot 8

**Virtual Keyboard** will help you to protect your password from a key-logger or malware that steals passwords. Please note virtual keyboard supports only Latin characters + special symbols like /\+=-^&\* etc. by pressing 'Shift' button.



screen shot 9

Now your Encrypted partition letter R:\ is accessible in My Computer. And double-clicking on it you have access to your encrypted files to edit and save files, listen to music and look through your pictures.



screen shot 10

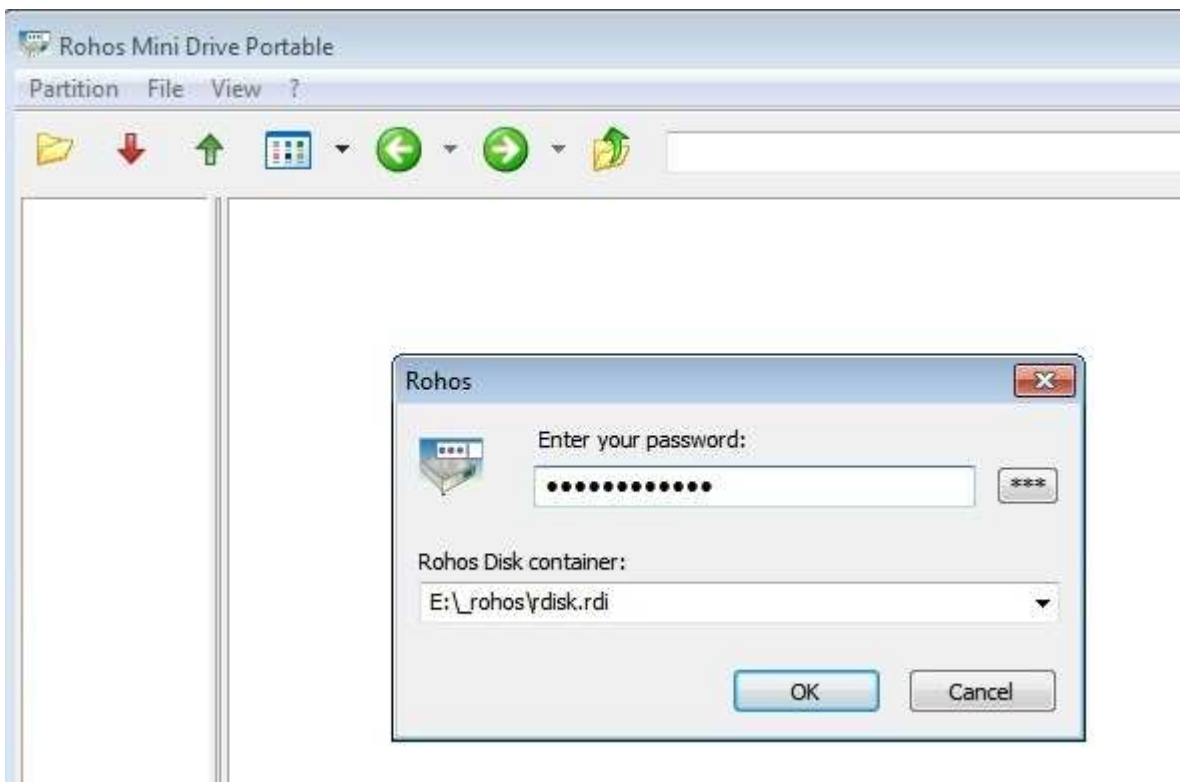
After you finished working with your encrypted files you need to disconnect Disk Letter R:\ using Rohos icon in the system tray:



screen shot 11

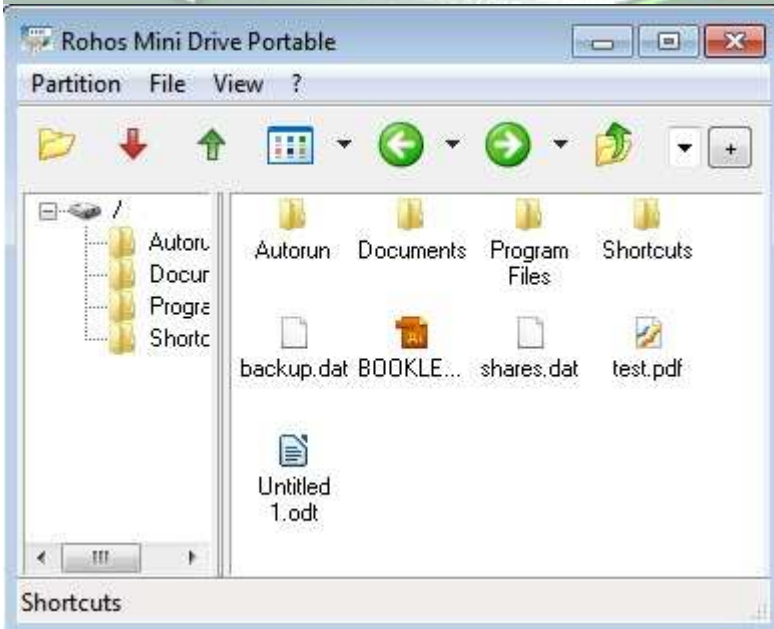
## How to access your encrypted partition on a guest PC (as a guest or user with no admin rights)

On a guest computer where you have no administrative rights Rohos Mini Drive Portable will be automatically launched and you will be able to work with your encrypted partition, which is seen as Windows Explorer.



screen shot 12

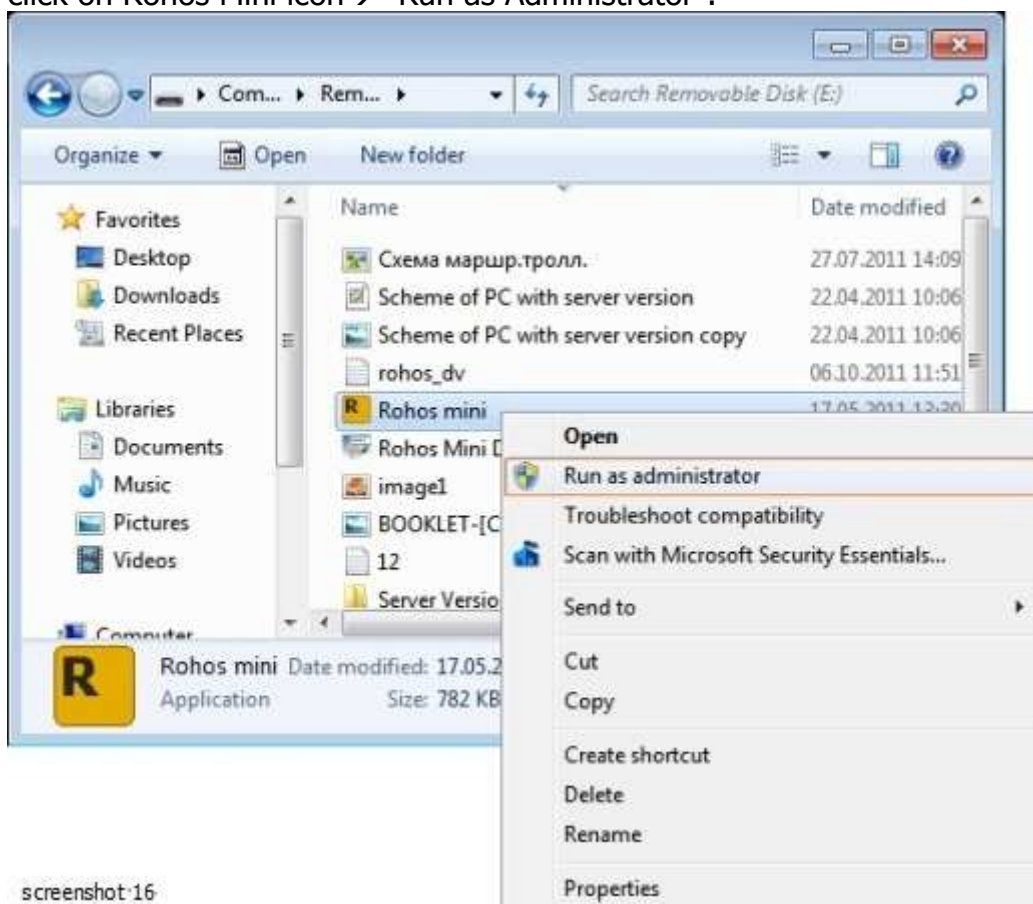
You can run any application and work with your hidden volume as usual (open, copy, edit, etc. files).



screen shot 15

Rohos Mini Drive Portable utility uses “on the fly” encryption principle, thus the program doesn’t save files in temporary folder and doesn’t leave unencrypted data on a PC or unprotected part of USB flash drive. When you open a file such as MS Word document, MS Word application will read and write changes to the file using Rohos Mini Drive Portable. When you run the program, the \*. exe will be decrypted and run from the RAM memory.

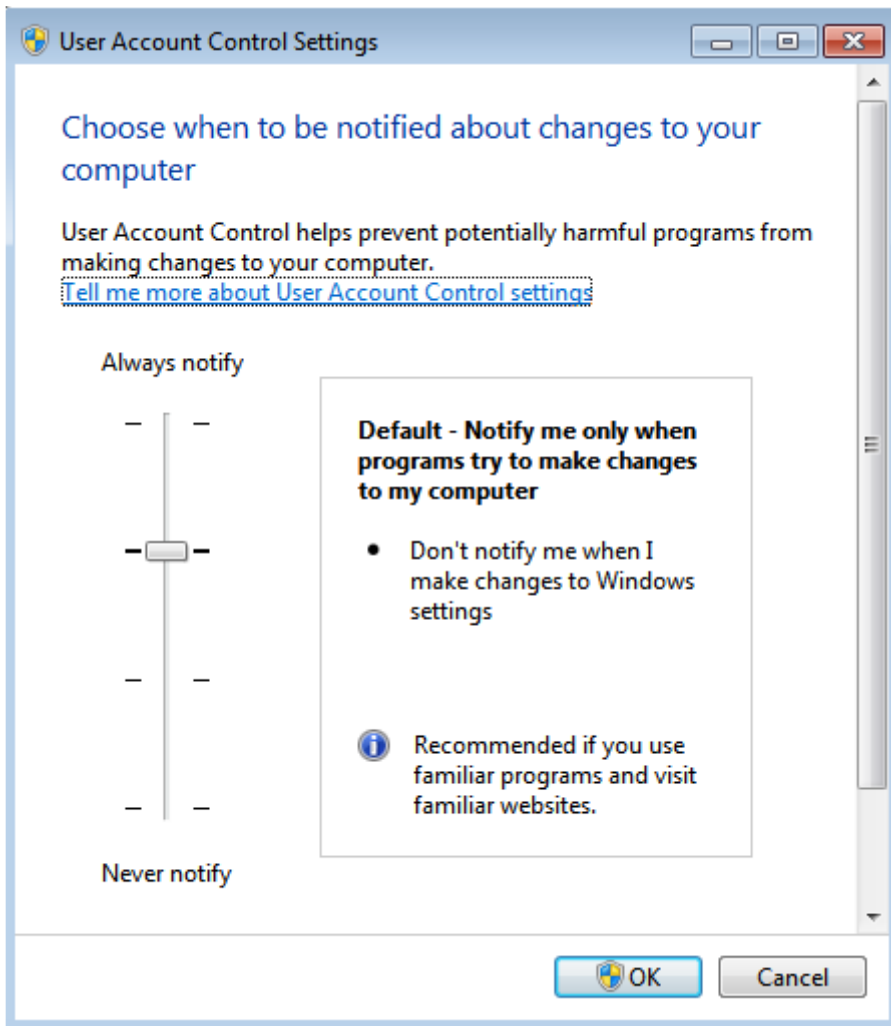
You can open encrypted disk using Rohos Mini on a guest computer. If Rohos Mini that you are trying to run is giving you a Access Denied or No Permission type error, then running it as an administrator can usually give the program the permission it needs to run properly. Right click on Rohos Mini icon → “Run as Administrator”.



screenshot 16

This show you how to have a program run as administrator with full elevated rights and privileges in Windows 7.

A Standard user will still not be able to run a elevated program without getting a User Account Control prompt and having to enter the administrator's password.



screenshot 17

## How to delete encrypted partition

- Insert USB flash drive with encrypted partition.  
Connect your hidden Rohos disk.  
In the main window Rohos Mini click on Tools → in the submenu choose Delete option.



screenshot 18

- Enter the password to obtain permit to delete the hidden partition. The disk is erased.

## How to delete all Rohos files from you USB flash drive

To delete all files from your USB flash drive, previously you have to delete encrypted partition as stated above. This procedure is necessary because Rohos disk is protected by default with password.

- Open Encrypt USB flash drive menu → Press Delete button and confirm. Now all Rohos files even non evident and hidden are erased from your memory drive.



screenshot 19



Rohos Mini home page - <http://rohos.com/products/rohos-mini-drive/>

Rohos Mini Drive Portable page - <http://www.rohos.com/support/knowledge-base/rohos-disk-browser/>

Rohos Mini Drive Portable is a separate portable tool that allows creating and managing encrypted partition on USB flash drive. You can download it from -

[http://www.rohos.com/rohos\\_mini.exe](http://www.rohos.com/rohos_mini.exe)

Type: Freeware