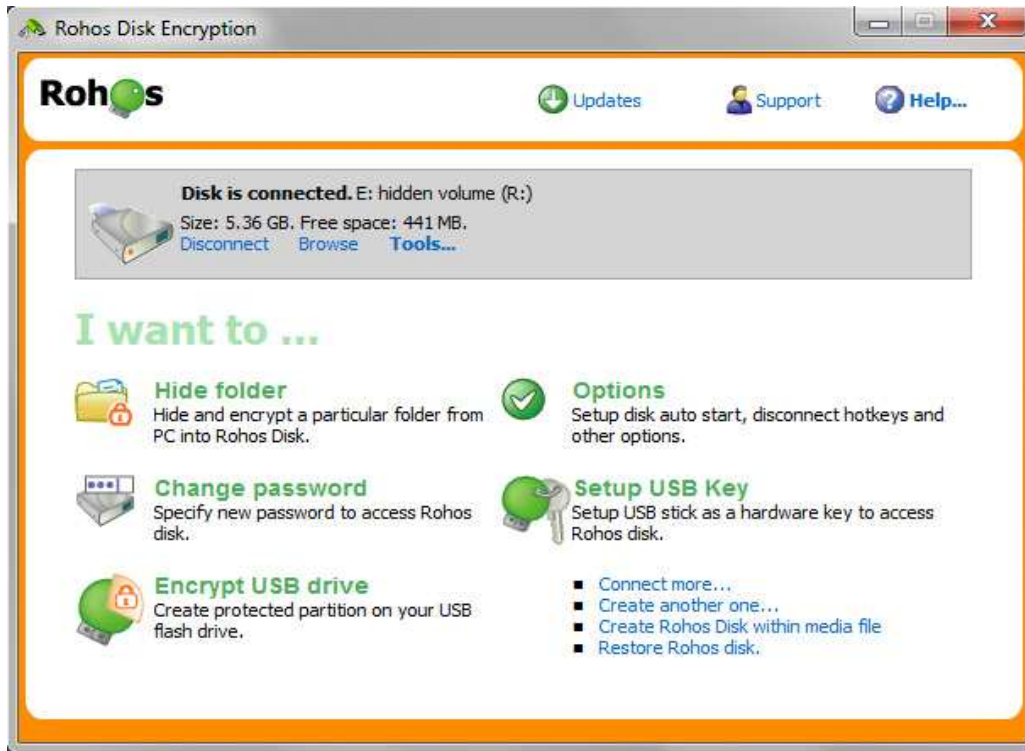


Rohos Disk Encryption - creates hidden and password protected partitions on the computer or USB flash drive. With megabytes of sensitive files and private data on your computer or USB drive you can not imagine life without the hidden partition that is created using this wonderful tool. It has a separate portable tool that allows accessing encrypted partition on USB flash drive from any PC where you work as a guest or user with no admin rights. Rohos Disk uses NIST approved AES encryption algorithm, 256 bit encryption key length. Encryption is automatic and on-the-fly. The installation requires administrative rights.

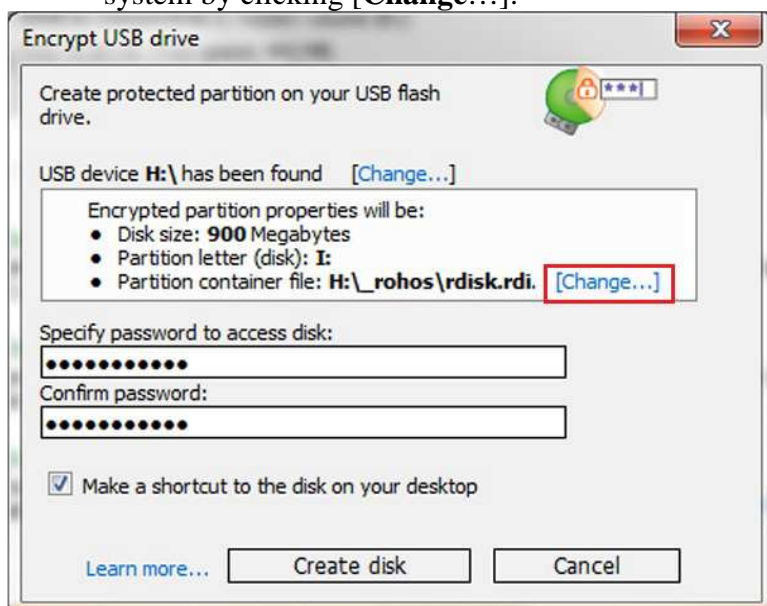
Encrypt USB drive

- After installation of Rohos Disk Encryption, insert your USB pen drive to the computer and run the Rohos Disk Encryption application.

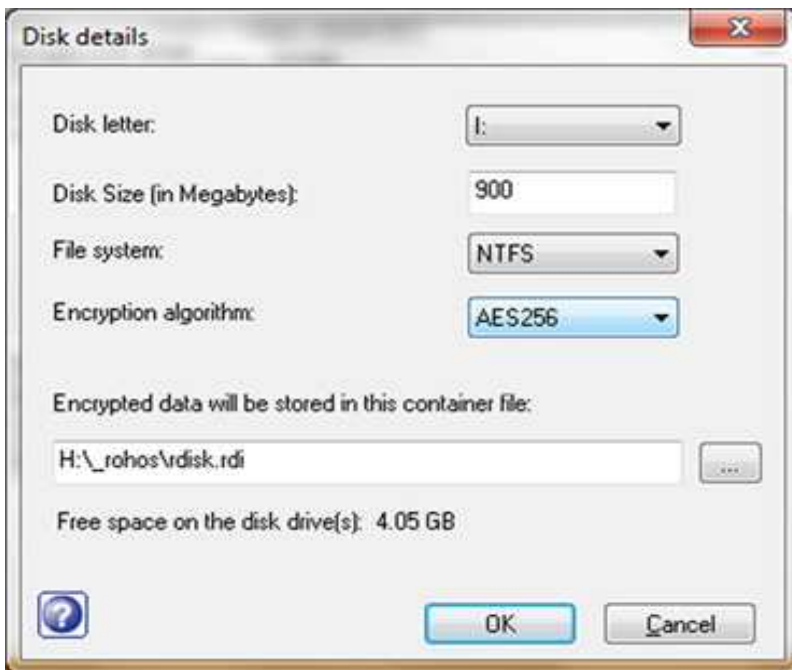


screen shot 1

- Click on “**Encrypt USB drive**”
- The program automatically determines the best Rohos disk options for your system. It will create a partition namely **I:** with 900 Mb space. You can customize the partition size, disk letter and file system by clicking [**Change...**].



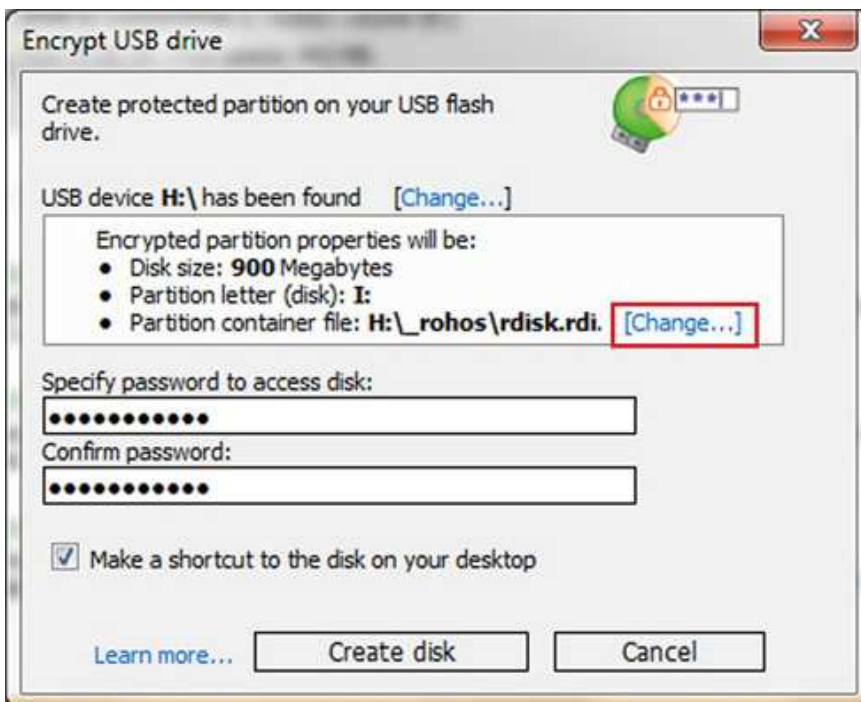
screen shot 2



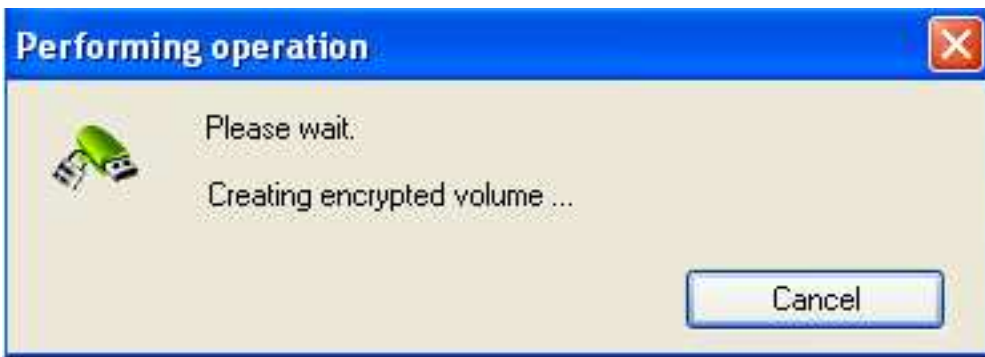
screen shot 3

Remember Rohos Disk Encryption has no encrypted disk size limit. Thus you may change disk size in this window. Notice that Rohos Disk displays your flash drive's available free space. Also file system may be changed. By default, Rohos Disk Encryption creates disk in NTFS but it may be changed to FAT/FAT32.

- After all disk settings are adjusted you may insert a password to Rohos disk, confirm it and click on **“Create disk”**.



screen shot 4



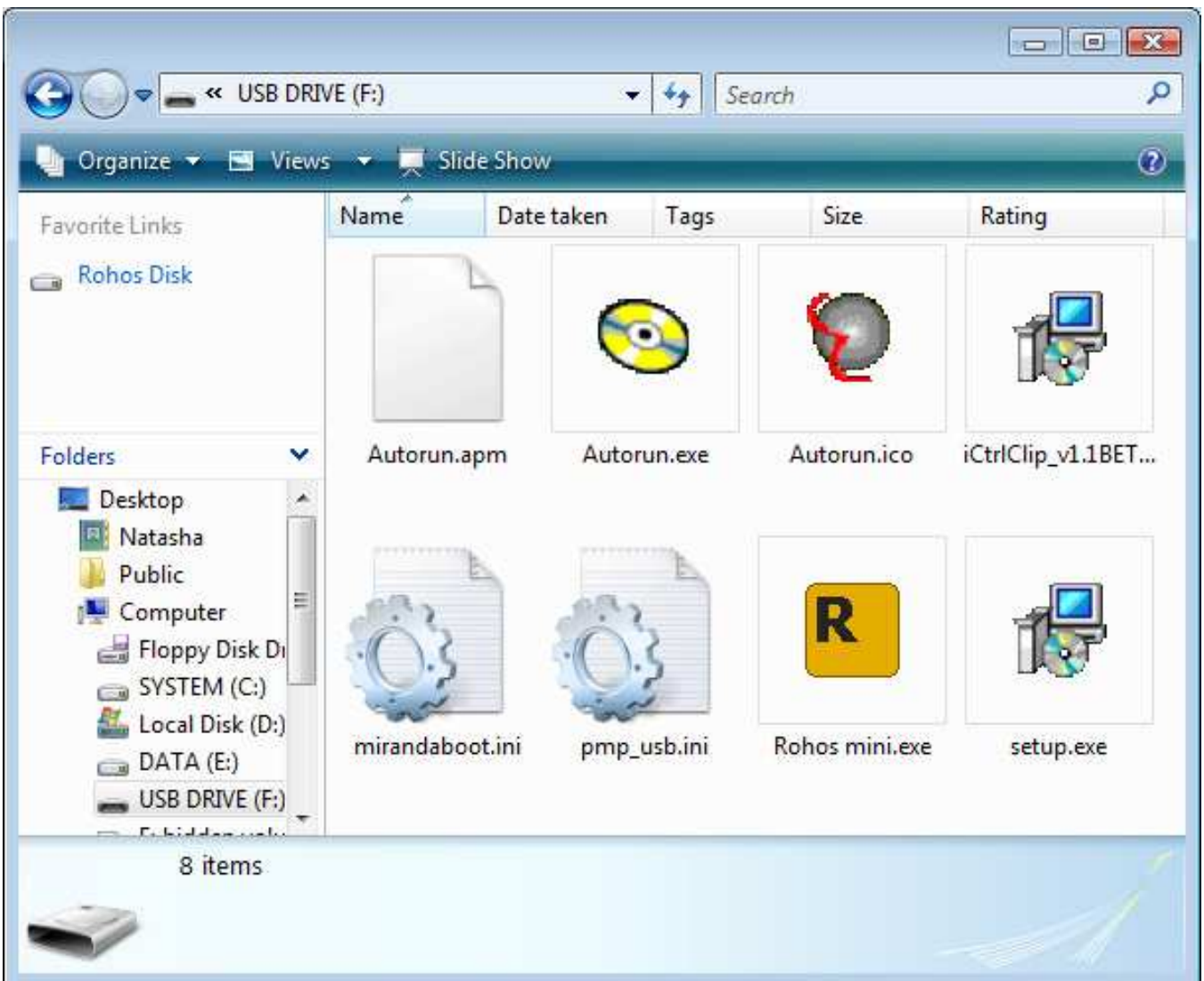
screen shot 5

It should take a few seconds to create an encrypted volume on your USB device.



screen shot 6

Portable Application allows working with a password protected partition on any PC, you just click on “Rohos Mini.exe” icon on the USB flash drive root folder

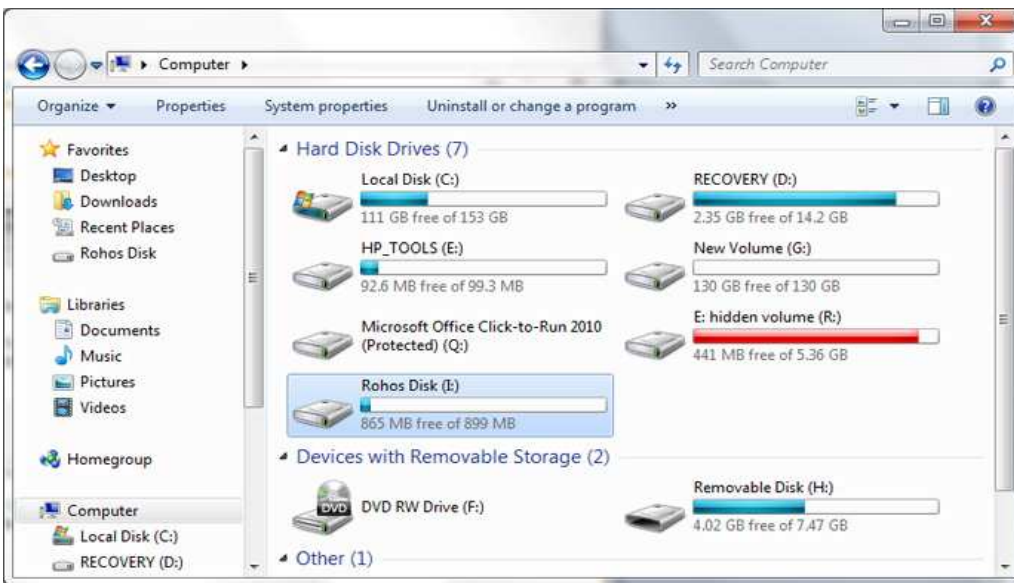


and enter disk password.



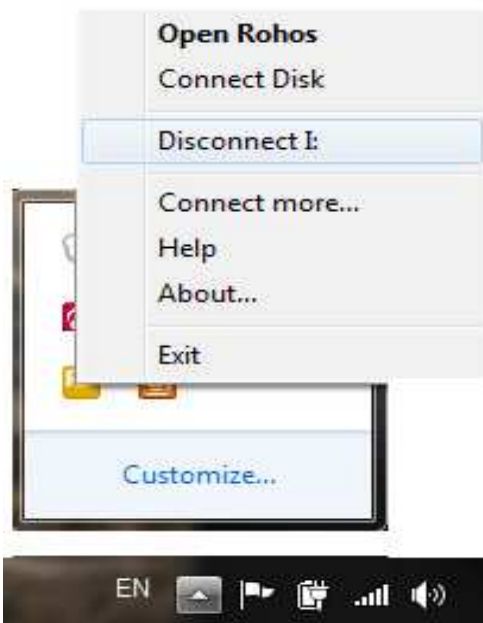
screen shot 8

Now your Rohos disk is accessible from Windows Explorer. And double-clicking on it you have access to your encrypted files to edit and save files, listen to music and look through your pictures.



screen shot 9

After you finished working with your encrypted files you may disconnect Rohos disk using Rohos icon in the system tray.



screen shot 10

Hide Folder

With this feature your protected items can be quickly and easily rendered inaccessible to other users but are instantly accessible when you turn on your Rohos disk.

Security benefits with Hide Folder feature:

- Allows encrypting any regular folder on the computer.
- Password protect any Application folder, for example C:\Program Files\Firefox
- Encrypt and hide your Skype chat, received files, contacts, Skype password; Google Chrome history, favorites, form data (credit card number), saved passwords.

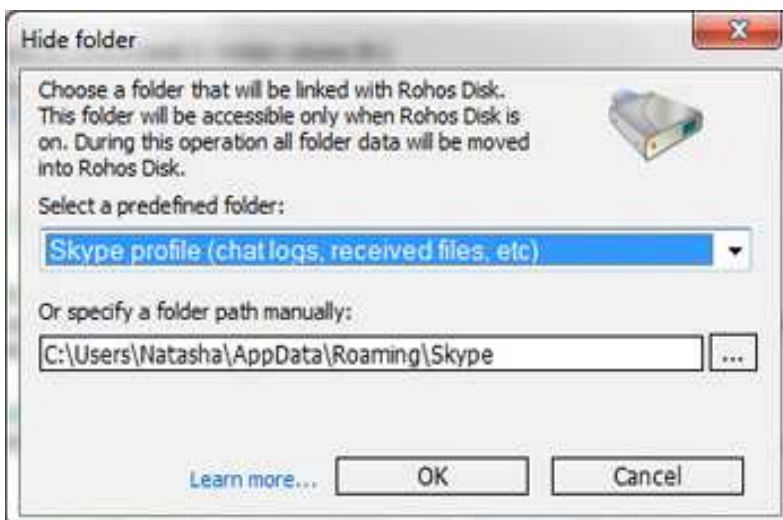
How it works:

Turn on your Rohos disk -> click on “**Hide folder**” link in the program’s main window



screen shot 11

In the “**Hide folder**” dialogue window there are given predefined folders, e.g. My Documents, Google Chrome data, Skype, etc. You’ll need to choose a folder that will be linked with your Rohos disk.



screen shot 12

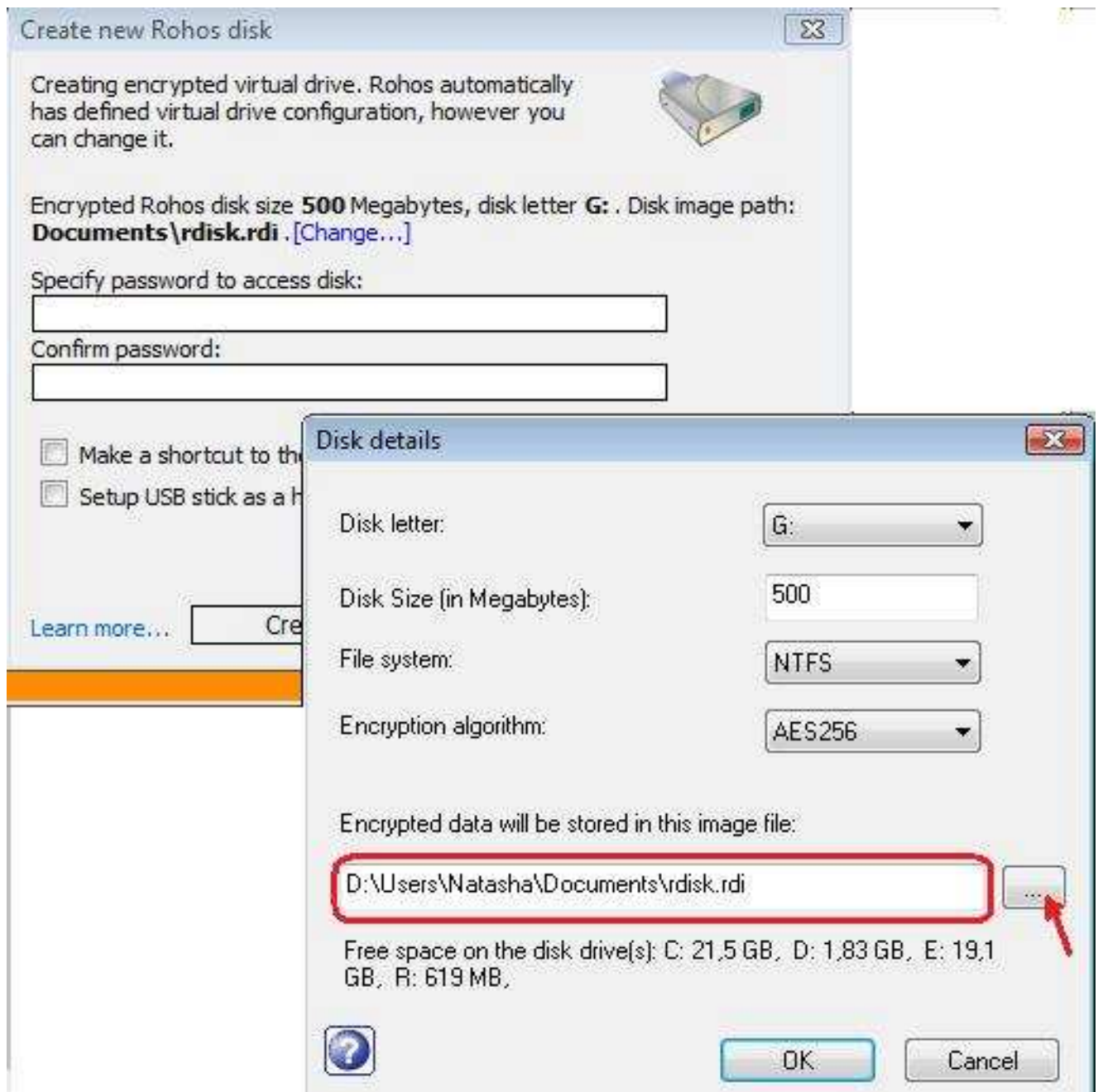
In our case we have chosen to encrypt/ password protect Skype profile. Then all you have to do is to click on “OK” button.

From now on you folder will be encrypted and hidden, and accessible only after your Rohos disk is turned on.

Encrypt HDD

Using Rohos Disk Encryption you may encrypt your HDD.

- At right bottom of Rohos Disk main window click on “**Create another one...**” link



screen shot 13

- You may change Rohos disk image path clicking on [**Change...**]. Rohos Disk displays the available free disk space on disk drives. You may change the disk drive by clicking on the button next to the field with Rohos Disk proposed disk drive. Other parameters may also be changed.
- Specify your Rohos disk password, confirm it and click on “**Create disk**” button

Have USB Key for access control

You can use any USB flash drive or security tokens like Aladdin eToken to access your secured disk automatically without need to remember and enter password manually.

- In Rohos Disk main window click on “**Setup USB Key**”



Screen shot 14

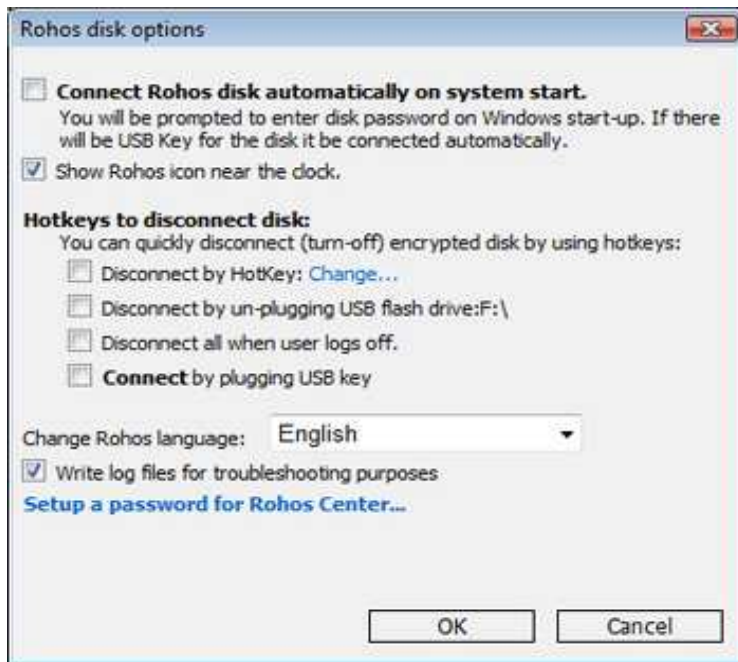
- Insert password for Rohos disk access and
- Click on “**Setup USB Key**” button
- By clicking on drop-down window you may choose the type of device to use for Rohos disk access

Please, note that in case you have got several Rohos encrypted disks you may specify the one you would like to be accessed by USB Key (only one).

- Click on [**Specify...**] next to “**Disk. Favorite disk**”
- In Windows Explorer choose the appropriate Rohos disk image-file (rdisk.rdi) and click OK

Rohos disk options

You can set up Hotkeys to quickly disconnect encrypted disk and create a password to access Rohos main window.



Screen shot 15

Steganography

Hide your sensitive files into a single AVI movie or media file such as MP3, OGG, WMA etc.

- In Rohos Disk main window click on “**Create Rohos Disk within media file**” link



Screen shot 16

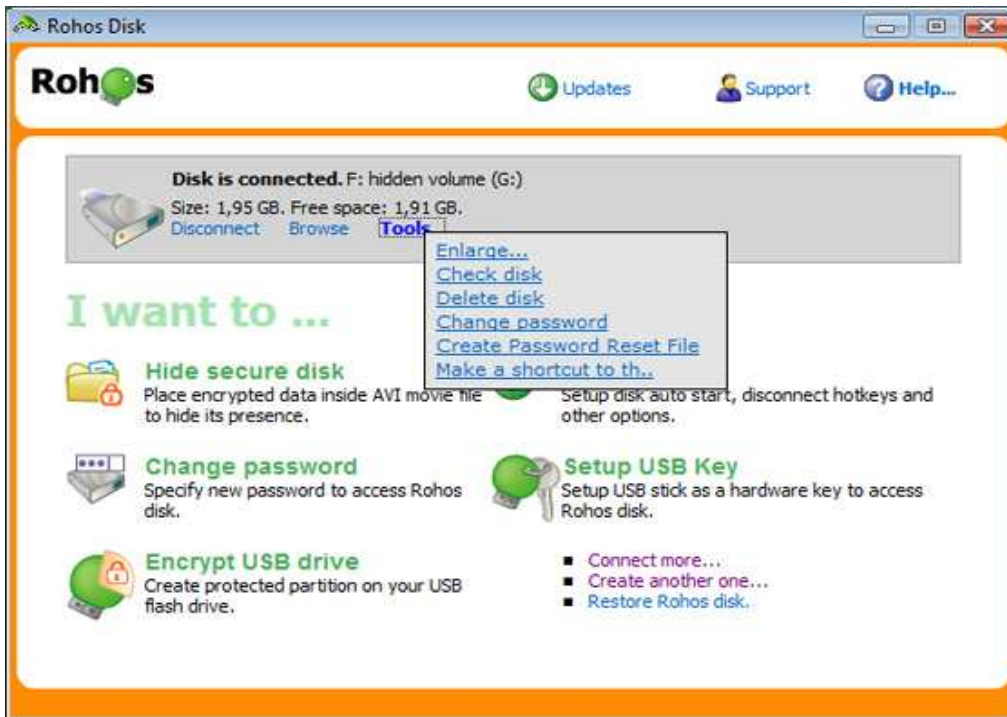
- Click on the link “**Choose media file...**” link
- Specify Rohos disk password and click “**Create disk**” button

Other Rohos Disk features

By clicking on “**Tools...**” in Rohos Disk main window you may:

1. Enlarge your Rohos disk (one at a time)
2. Check Rohos disk for errors – in case your Rohos disk doesn't get connected.
3. Delete disk – easy as 1, 2, 3...
4. Change password of your Rohos disk

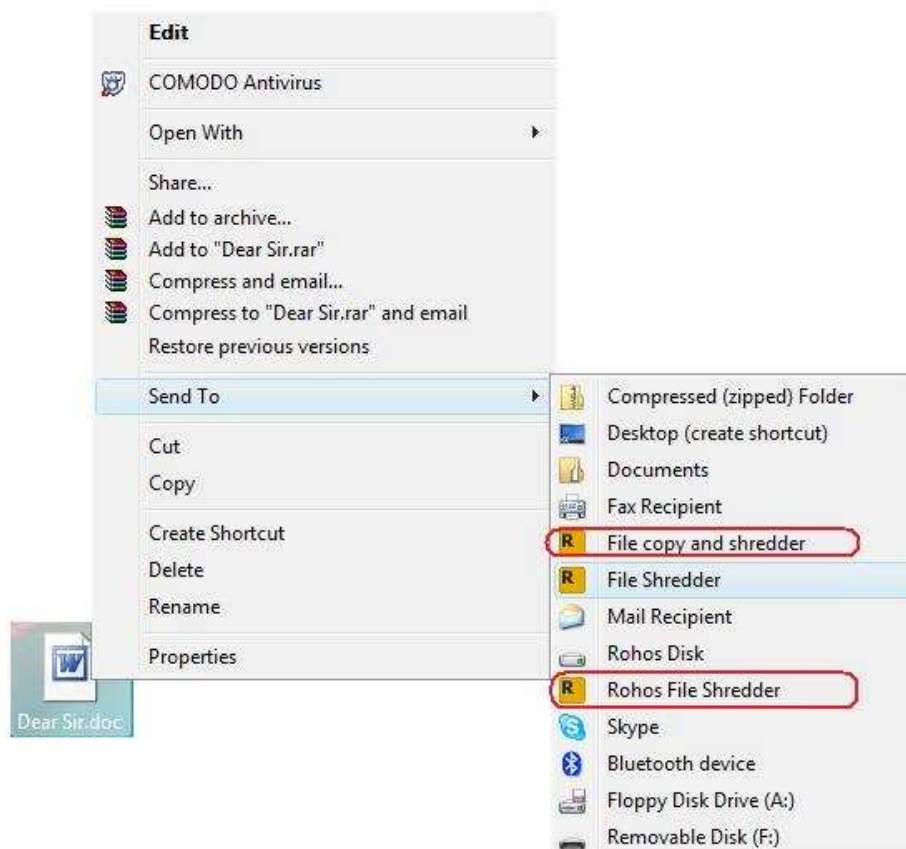
5. Create Password Reset file – but remember to keep a secret where you have saved this file
6. Make a shortcut to the disk on your desktop - creating disk shortcut just with one mouse click.



screen shot 17

Integrated File-Shredder

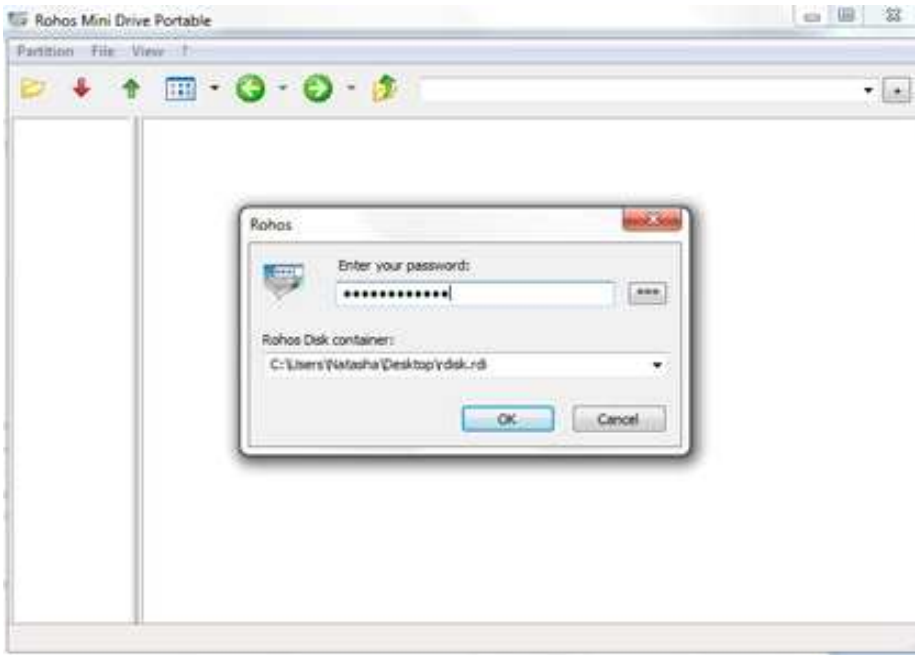
Any file or folder can be easily moved into Encrypted Rohos disk with shredding afterwards. This tool helps you to delete file reliably and be sure that nobody can recover it.



screen shot 18

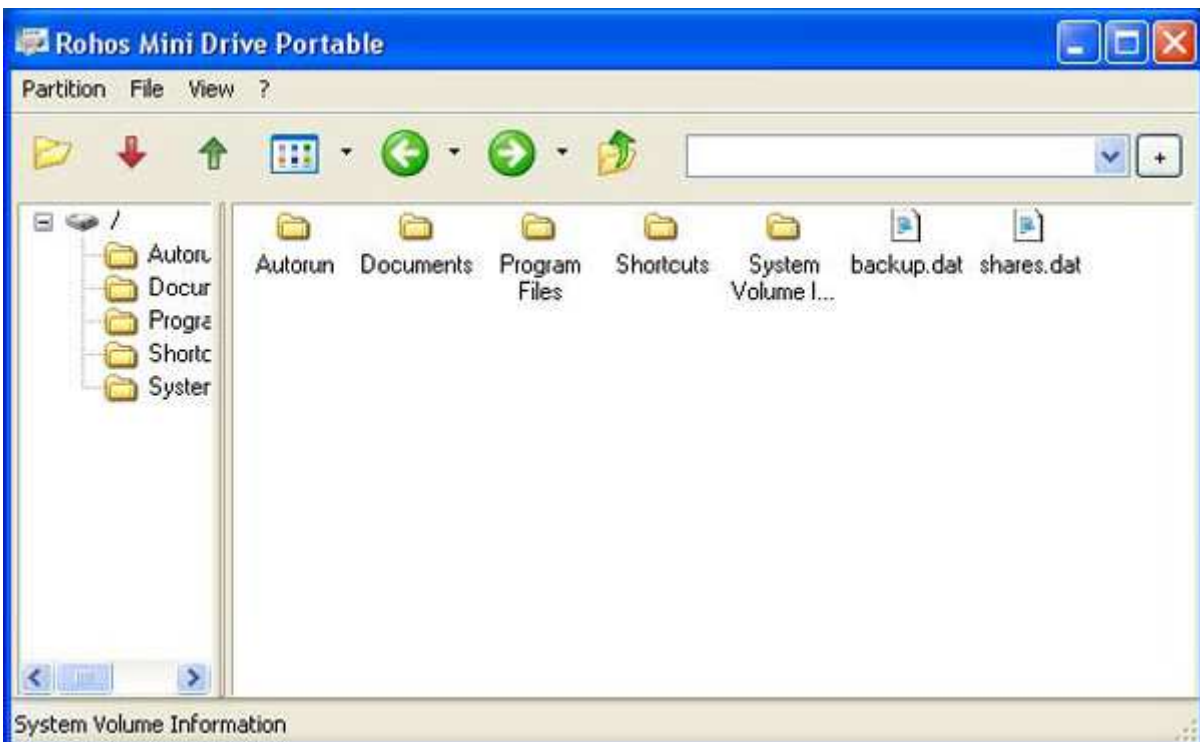
Access your Rohos portable partition on a PC without Admin rights

On a computer without administrative rights Rohos Mini Drive Portable will automatically be launched and you will be able to work with your encrypted partition, which is seen as Windows Explorer.



screen shot 19

You can run any application and work with your hidden volume as usual - open, copy, edit files, view images, ect.



screen shot 20

Rohos Mini Drive Portable utility uses “on the fly” encryption principle, thus the program doesn’t save files in temporary folder and doesn’t leave unencrypted data on a PC or unprotected part of USB flash drive. When you open a file such as MS Word document, MS Word application will read and write changes to the file using Rohos Mini Drive Portable. When you run the program, the *.exe will be decrypted and run in the program memory.

Virtual Keyboard will help you to protect your encrypted disk password from a key-logger.



Screen shot 21

Rohos Disk Encryption download page - <http://www.rohos.com/desktop-security/rohos.exe>

Rohos Disk Encryption home page - <http://rohos.com/products/rohos-disk-encryption/>

Rohos Mini Drive Portable page - <http://www.rohos.com/support/knowledge-base/rohos-disk-browser/>

Type: Shareware (30-day trial version)