

# Rohos Logon Key for Windows Remote Desktop logon with YubiKey token

Step-by-Step Integration Guide.



Tesline-Service S.R.L.  
10 Calea Iesilor str.,  
Chisinau,  
MD-2069, Moldova.  
Tel: +373-22-740-242

[www.rohos.com](http://www.rohos.com)

Please check Rohos web site for updates to this or other documentation.

Germany: [www.rohos.net](http://www.rohos.net) , Spain: [www.rohos-es.com](http://www.rohos-es.com) , France: [www.rohos-fr.com](http://www.rohos-fr.com)

## Table of Contents

Overview: Rohos Logon Key for YubiKey .....	4
Installation Requirements.....	4
Modes of YubiKey security.....	4
Installation .....	4
Rohos Logon Key server configuration .....	5
YubiKey OTP configuration .....	7
Test Windows Remote Desktop logon.....	8
Troubleshooting.....	9

## License and Warranty Information

Tesline-Service S.R.L. retain all ownership rights to the computer program described in this manual and other computer programs offered by the company (hereinafter called Tesline-Service) and any documentation accompanying those programs. Use of Tesline-Service software is governed by the license agreement accompanying your original media. Tesline-Service software source code is a confidential trade secret of Tesline-Service. You may not attempt to decipher, de-compile, develop, or otherwise reverse engineer Tesline-Service software, or allow others to do so. Information needed to achieve interoperability with products from other manufacturers may be obtained from Tesline-Service upon request.

This manual, as well as the software described in it, is furnished under license and may only be used or copied in accordance with the terms of such license. The material in this manual is furnished for information use only, is subject to change without notice, and should not be construed as a commitment by Tesline-Service. Tesline-Service assumes no liability for any errors or inaccuracies that may appear in this document.

Tesline-Service reserves the right to make changes in design or to make changes or improvements to these products without incurring the obligation to apply such changes or improvements to products previously manufactured. In no event shall Tesline-Service or any of its agents be responsible for special, incidental, or consequential damages arising from the use of these products or arising from any breach of warranty, breach of contract, negligence, or any other legal theory. Such damages include, but are not limited to, loss of profits or revenue, loss of use of these products or any associated equipment, cost of capital, cost of any substitute equipment, facilities or services, downtime costs, or claims of customers of the Purchaser for such damages.

The Purchaser may have other rights under existing federal, state, or provincial laws in the USA, Canada, or other countries or jurisdictions, and where such laws prohibit any terms of this warranty, they are deemed null and void, but the remainder of the warranty shall remain in effect.

## Copyright

Copyright © 2001-2009, Tesline-Service All Rights Reserved. No part of this publication may be reproduced, transmitted, transcribed, stored in a retrieval system, or translated into any language in any form or by any means without the written permission of Tesline-Service Inc.

## Trademarks

Tesline-Service, Rohos, are either registered trademarks or trademarks of Tesline-Service Inc.

Microsoft Windows and Windows XP/2000/2003/NT/Vista are registered trademarks of Microsoft Corporation. YubiKey is a registered trademark of Yubico. All other trademarks, trade names, service marks, service names, product names, and images mentioned and/or used herein belong to their respective owners.

## Additional Information, Assistance, or Comments

Tesline-Service technical support specialists can provide assistance when planning and implementing Rohos Logon Key in your network. In addition to aiding in the selection of the appropriate authentication products, Tesline-Service can suggest deployment procedures. This complimentary support service is available by email only.

To contact Tesline-Service directly:

support@rohos.com

For information about obtaining a support contract, see our Support Web page at <http://www.rohos.com>.

## Overview: Rohos Logon Key for YubiKey.

Rohos Logon Key is a Windows login solution that offers hardware based and two-factor authentication login to Microsoft Windows as well as for Windows Remote Desktop. As a password replacement Rohos offers to use a variety of hardware tokens, for example YubiKey – One Time Password token.

Key features:

- Doesn't require to install anything on client computers;
- Support cross Remote Desktop connections. (Remote Desktop via Remote Desktop);
- Cross platform: Connect to Windows Remote Desktop from Mac or Linux also;
- Works with Windows Active Directory configurations;
- Support password update/renewal policies;
- Allows to quickly Add or disable certain YubiKey tokens from access.

## Installation Requirements

- Windows 2003/2008 as for Terminal Server;
- Internet connection on TS computer to verify OTP;

## Modes of YubiKey security

Rohos Logon Key supports 3 types of authentication with YubiKey:

Remote OTP validation	Rohos verifies each OTP string on the validation server. This mode requires to set up OTP validation server (Yubico server by default).
Local OTP validation	Rohos verifies OTP string by itself (decrypts OTP and manages OTP counters). This mode requires to have a decryption key list for all YubiKeys.
Yubikey as a static identifier (default)	Verifies just first 12 characters of OTP string. This mode should be used for testing purposes or local Windows login only.

## Installation

To install Rohos Logon Key on Terminal Server:

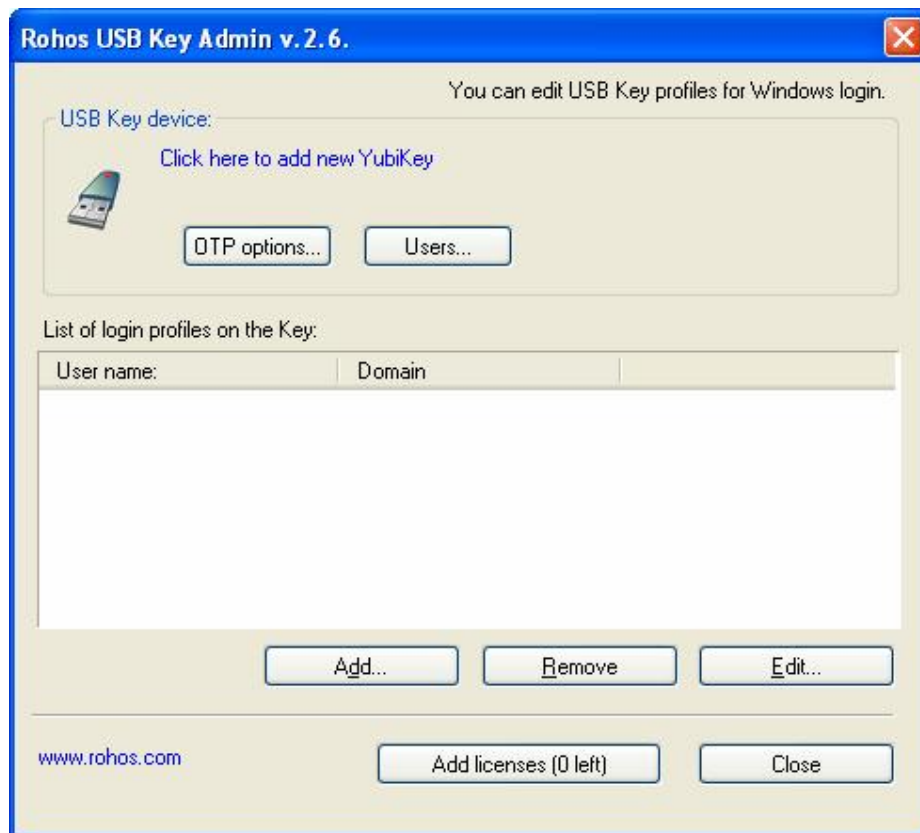
1. Install Rohos Logon Key on the Terminal Server computer (Windows restart is not needed)
2. Open Rohos Logon Key > Options > Change **USB Key type** to "YubiKey" > OK (don't restart)
3. Click Rohos Logon Key > Help > Get Registered and enter you license key.
4. Install Rohos Logon Key server version

5. Open USB Key Management tool > Add license key. Copy/Paste here at least one license key > OK

## ***Rohos Logon Key server configuration***

After installing Rohos Logon Key and Rohos Logon Key server version on the Terminal Server Computer you can set up first YubiKey token.

1. Open Rohos USB Key Management tool:



2. Click "Click here to Add new YubiKey..."

In the dialog box "Please touch your YubiKey" click your Yubikey to generate OTP string.



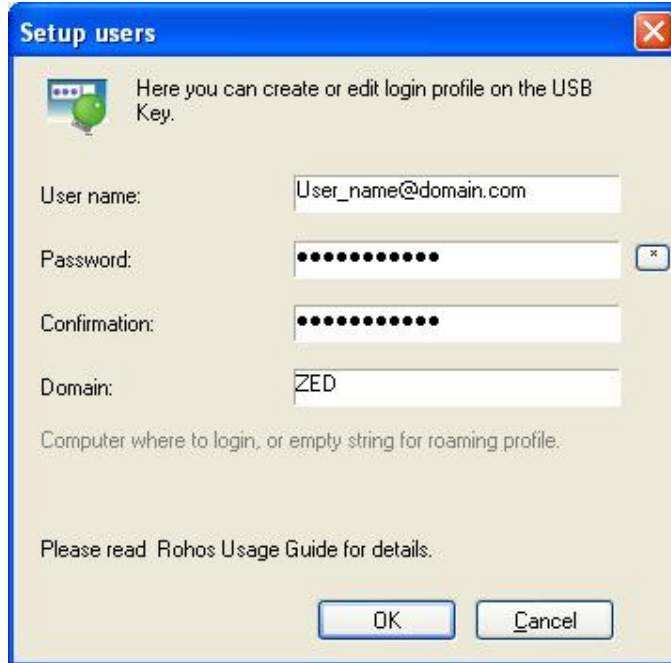
the token OTP will be verified and allowed to add login profiles into it.

3. Click “Add..” to add logon profile for user who will access Remote Desktop with this YubiKey.

For example:

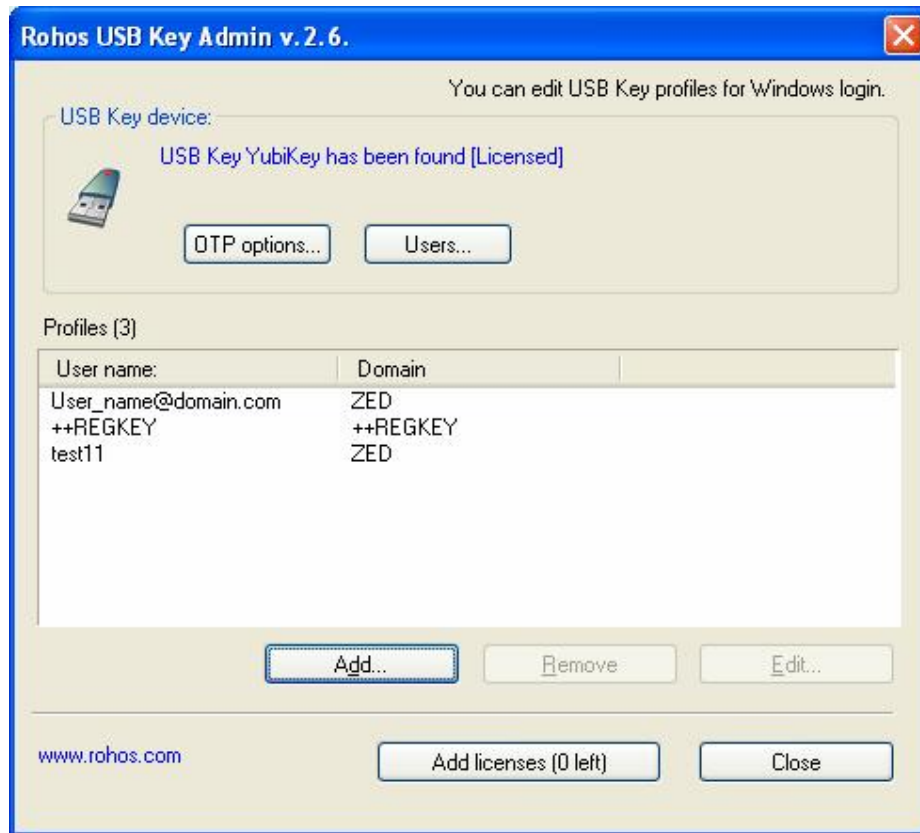
- user name: “User\_name“. Attached to domain “domain.com” (this part is optional)
- will be allowed to access remote desktop of Terminal Server “ZED”

Please note “ZED” is terminal server computer where Rohos is installed.



After adding logon profile it will appear in profiles list.

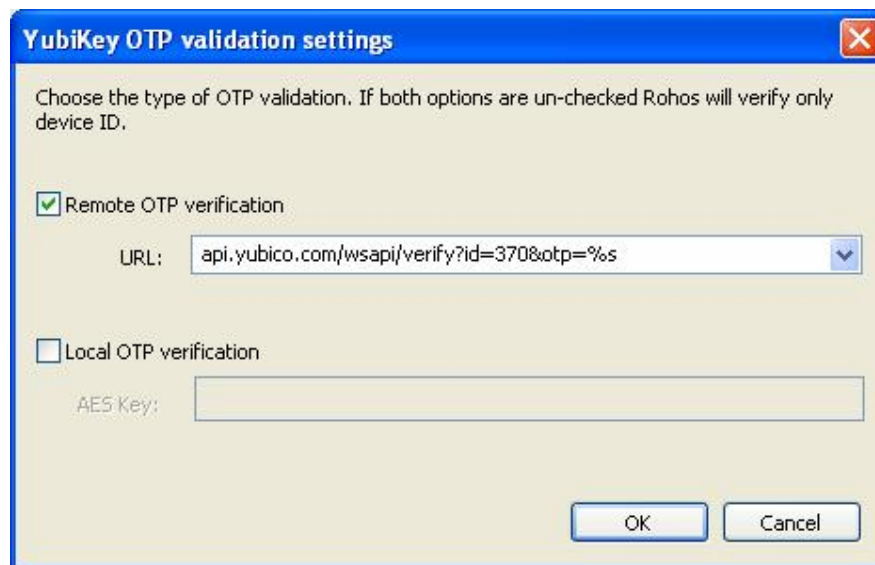
Please note ++REGKEY is a special entry showing that this token is licensed with Rohos Logon key license.



## YubiKey OTP configuration

Open Rohos USB Key Admin and choose OTP verification method. Click on “OTP options...” button.

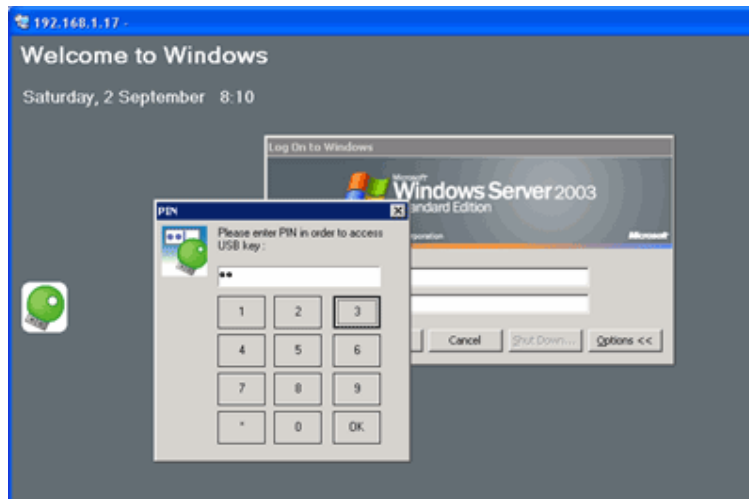
It’s recommended to use Yubico OTP validation server:



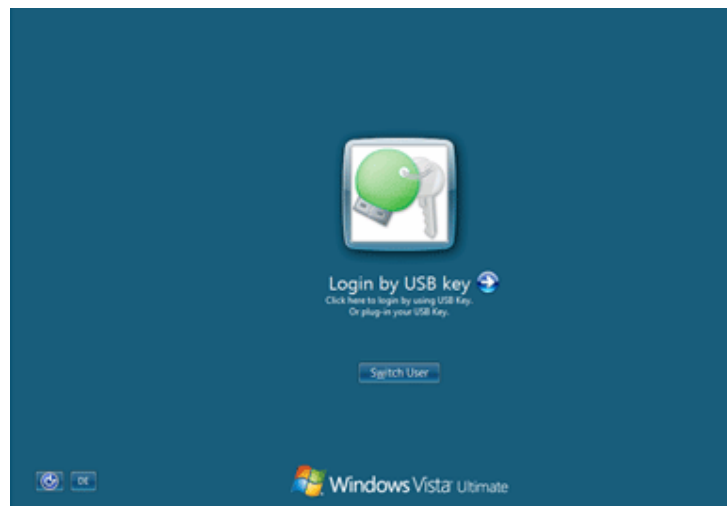
## Test Windows Remote Desktop logon

On any client workstation open Remote Desktop connection program.

On the Windows 2003 Remote Desktop screen you should see the following. Click on the green key icon to start login with YubiKey:

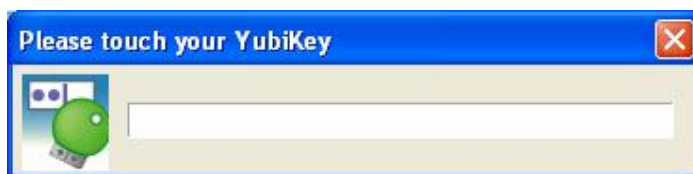


On the Windows Vista/2008 Remote Desktop screen you should see the following: Click on the arrow icon to start login with YubiKey:



In the “Please touch your YubiKey” dialog box touch your YubiKey:





It may fail to auto-ENTER at the end, so you need to hit Enter on the keyboard (this is MS RDC issue).

The login should begin.

## Troubleshooting

If you are experiencing authentication issues, please contact us. Our support person may ask you to send Rohos log files at c:\Program Files\Rohos\ welcome.log, rohos\_ui.log, yubico\_mod\_welcome.exe.log, credprov2.log

If no traffic appears in the log files, it is possible that the Rohos Logon was not configured correctly.

Problem	Solution
USB Key manager doesn't show "Click here to Add new YubiKey..." and "OTP setting..." buttons	Open Rohos Logon Key > Options > and choose YubiKey in USB type list box. Restart USB Key admin.
The dialog 'Please touch your YubiKey' accepts OTP string and then opens again	<ul style="list-style-type: none"> <li>• this Yubikey is not accepted for logon</li> <li>• or OTP verification failed.</li> </ul> Check "OTP options" dialog box. Enter valid OTP verification URL or AES key.
'Demo USB Key has been found' message appears	It means there were no license keys added into USB Key Manager tool.
Green Rohos icon is not visible in remote desktop logon screen	Rohos Logon Key should be installed on the terminal server.

Support contact: [info@rohos.com](mailto:info@rohos.com)